

POSPAC MMS 8

NOW WITH POST-PROCESSED CENTERPOINT® RTX SERVICE!

POSPac MMS™ (Mobile Mapping Suite) 8 is Applanix' next generation of industry leading GNSS-Aided Inertial post-processing software for georeferencing data collected from cameras, LIDARS, multi-beam sonars and other sensors on mobile platforms.

NOW WITH TRIMBLE RTX TECHNOLOGY!

Using Trimble® RTX™ technology, POSPac MMS 8 delivers significant new benefits for mobile mapping from land, air, marine and UAV platforms:

- ▶ Achieve centimeter-level accuracy within minutes after data collection with just an internet connection – no need to set up base stations, no need to wait for delivery of public-domain ephemeris data
- ▶ Map inaccessible regions that have no existing Continuously Operating Reference Stations (CORS) without the cost of deploying local base stations
- ▶ Attain more uptime and reliability using Trimble's professionally managed, highly maintained private network
- ▶ Automatically survey in dedicated base stations direct from POSPac - streamline map production workflow

INDUSTRY LEADING SOFTWARE

"Applanix has a solid track record of delivering new and innovative solutions to its customers to solve their business needs. By integrating the Trimble RTX technology into POSPac MMS we are able to continue this tradition and offer our customers something that is truly unique and promises a whole new level of accuracy and efficiency."

- Joe Hutton, Director of Inertial Technology and Airborne Products at Applanix Corporation.

ABOUT TRIMBLE RTX

Trimble RTX is a proprietary GPS, GLONASS, BeiDou and QZSS enabled technology that provides high-accuracy GNSS positioning worldwide without the use of traditional local base stations or a VRS network. By combining real-time data from a global reference station infrastructure with innovative positioning and compression algorithms, Trimble RTX technology computes centimeter-level positions based on satellite orbit and clock information.

POSPAC 8 IMPLEMENTATION

POSPac 8 includes a post-processed implementation of Trimble's premier CenterPoint® RTX service, integrated with Applanix' industry leading IN-Fusion™ GNSS-Aided Inertial processing to provide robust, centimeter level position and orientation information worldwide and without reference stations. The Post-Processed CenterPoint RTX service is available for purchase as a 6 or 12 month subscription.

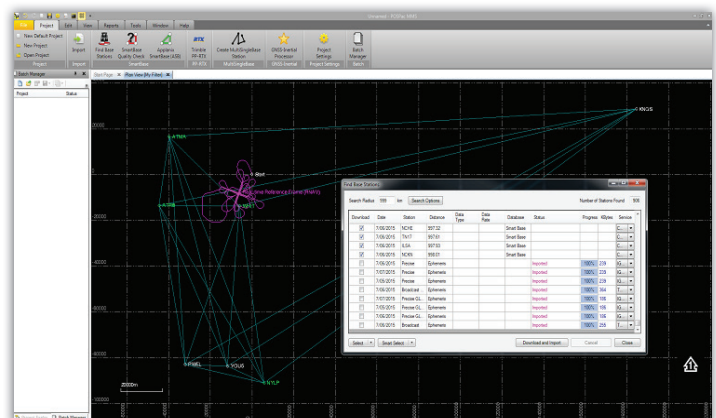
YOUR BENEFITS

- ▶ Reduced acquisition costs
- ▶ Reduced re-work costs with "know before you go" in field quality control
- ▶ Faster production
- ▶ Better accuracy
- ▶ Increased utilization

Key Features

- ▶ Post-Processed Trimble CenterPoint RTX trajectory processing (PP-RTX)
- ▶ Automatic base station survey using static PP-RTX
- ▶ "Know before you go" Quality Control licenses for checking GNSS data in the field, ensuring accuracy specifications are met before leaving the project area
- ▶ New floating license support – share a single license across a network or between computers
- ▶ New User Interface
- ▶ 64-bit processing for faster throughput
- ▶ Windows 10 support
- ▶ RTCM 3.2 support
- ▶ SmartBase database update

POSPac MMS 8 is now available worldwide through Applanix sales channels. For more information or to purchase POSPac 8, go to: <http://www.applanix.com/products/pospac-mms.htm>



Parc du Grand Troyes / 3 Rond-point Winston Churchill
 CS70055 / 10302 Sainte-Savine Cedex
 Tél. : 03 25 71 31 54 / geospatial@d3e.fr
www.geospatial.d3e.fr